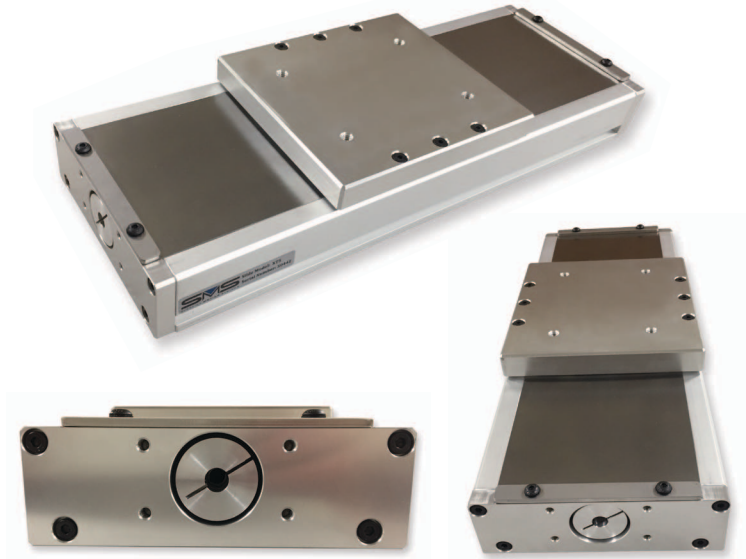


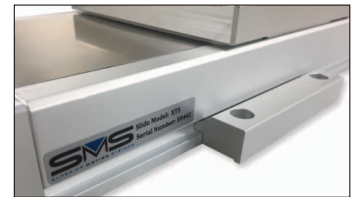
XT5 Enclosed Coupling

- Coupling Enclosed to Protect All Moving Parts
- 5" Wide Heavy Extrusion Base
- 2.275" Profile Height
- 2 Block or 4 Block Linear Guide
- Ball Screw or ACME Screw Drive
- 6", 8", 12", 18", 24", 36" Travel Standard Length
- Custom Travel Lengths Available
- NEMA 23, NEMA 34 or SERVO Motor Mounts
- Clamp-style Mounting



Model	H	Mounting Holes (D)	L	Thrust Capacity	Payload Capacity
XT5-0/C-LS2	2.275"	1/4-20 x .350" Deep	Travel + 8.2"	556 lbs.	1,100 lbs.
XT5-0/C-LS4	2.275"	1/4-20 x .350" Deep	Travel + 11.2"	556 lbs.	2,200 lbs.

Optional Side Clamps are available for both the XT3 and XT5 models (add-ons shown below.)



XT3/XT5 Stages are semi-custom units. Standard options are available for each, but most slides are designed for use with specific applications. Contact SMS for more details.

