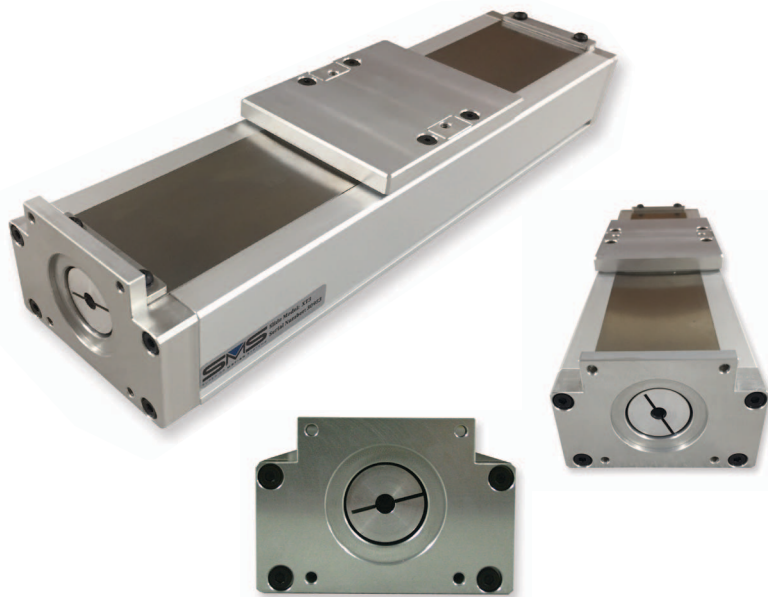


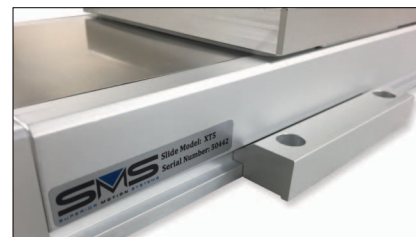
XT3 Enclosed Coupling

- Coupling Enclosed to Protect All Moving Parts
- 3.25" Wide Extrusion Base
- 2.080" Profile Height
- Standard (LS) or Long (LSL) Guide Block
- Ball Screw or ACME Screw Drive
- 6", 8", 12", 18", 24", 36" Travel Standard Length
- NEMA 23, NEMA 34 or SERVO Motor Mounts
- Clamp-style Mounting
- Beam Coupling Max Bore = 10mm



Model	H	Mounting Holes (D)	L	Thrust Capacity	Payload Capacity
XT3-EC-LS	2.080"	10-32 x .350" Deep	Travel + 6.25"	458 lbs.	550 lbs.
XT3-EC-LSL	2.080"	10-32 x .350" Deep	Travel + 6.25"	458 lbs.	700 lbs.

Optional Side Clamps are available for both the XT3 and XT5 models (add-ons shown below.)



Load/Life calculations have many variables. Consult SMS Engineering for your specific application.

XT3/XT5 Stages are semi-custom units. Standard options are available for each, but most slides are designed for use with specific applications. Contact SMS for more details.

